

PART OF THE NW. 1/4, OF SECTION 21, T.6N., R.2W., S.L.B. & M.

720

CAZIER SUBDIVISION

IN WEBER COUNTY

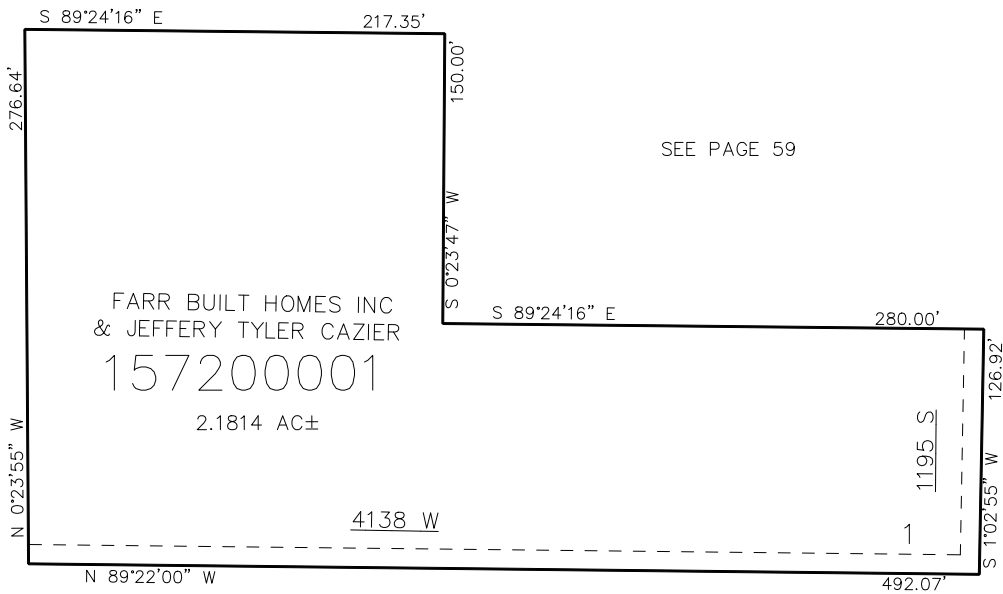
TAXING UNIT: 514

SCALE 1" = 50'

SEE PAGE 59

SEE PAGE 59

SEE PAGE 59



1250 SOUTH STREET

SEE PAGE 59

10' UTILITY & DRAINAGE EASEMENTS EACH
SIDE OF PROPERTY LINES AS INDICATED
BY DASHED LINES EXCEPT AS OTHERWISE
SHOWN.

FOR COMPLETE ENC DATA SEE
ORIGINAL DEDICATION PLAT IN
BOOK 88, PAGE 01 OF RECORDS.